

Grove Primary

Early Years Induction

Parental Information



Grove School

Our Mission Statement:



“Enjoy, Learn, Achieve”

Welcome to Grove School

On behalf of all the children, parents and staff at Grove we would like to welcome you and your child to our Early Years Foundation Stage department.

We aim for all our children to have a happy and enjoyable start to their education in order to build successful foundations for learning and wish to involve you, as parents, in this process throughout their journey.

This booklet has been designed to provide you with information about Grove Early Years Foundation Stage department to answer any queries you may have and provide you with a good insight into what and how your child will be learning.

We hope that this will be the start of a long, happy and successful journey of education for your child.

Our Expectations

At Grove we have developed in consultation with children, parents and staff, a set of expectations which we continually refer to and return to as a school community. Our expectations are the foundation of all we do and say:

- Are good listeners and thoughtful speakers
- Are honest and tell the truth
- Are kind and don't hurt others or their feelings
- Are supportive of others
- Always try to do our best
- Always treat others as we would like to be treated



Settling In

Starting at Grove will be a big step for most children and the time we spend settling them in will lead to happier, more confident children who enjoy school and are eager to learn. You will be invited to an induction session with your child. During this induction visit we will ask you some questions about your child, their likes and dislikes, their health and development. This information will help us to settle your child in.

For our nursery children:

Your child will be invited to attend their first nursery sessions with you to help them settle. You will be asked to stay with your child for the first hour for each session. Once your child is settled and is willing to part from you, staff will talk to you about establishing regular nursery hours.

For our reception children:

For your child's first week of school, they will attend for *either* three morning sessions *or* three afternoon sessions (Wednesday, Thursday and Friday). There will not be a school lunch in the first week. The second week they will attend full time and enjoy a school lunch. You will receive a letter to confirm this. This will help your child to settle. Some children may

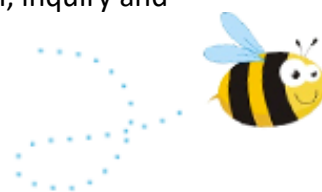


take a little longer and remain part-time until they have settled. Staff will talk to you if this is the case. We want to be sure that your child is happy and confident in their new surroundings and eager to meet the exciting learning opportunities available at Grove.

Our Vision for Your Child

At Grove we recognise that high quality education makes life-long, positive difference to children. We aim to provide

- an Early Years Foundation Stage environment which is play based and takes place both indoors and outdoors
- high quality provision where children learning through exploratory play and problem-solving activities
- high quality provision based on child interest
- learning that challenges children and encourages exploration, inquiry and imagination



What will my child be learning?

Children in the early years department follow a broad and balanced curriculum called **The Early Years Foundation Stage**. Your child will be learning skills, acquiring new knowledge and demonstrating their understanding through **7 areas of learning and development**.

Children should mostly develop the **3 prime areas** first. These are:

- Communication and language;
- Physical development and
- Personal, social and emotional development.

These prime areas are those most essential for your child's healthy development and future learning. As children grow, the prime areas will help them to develop skills in **4 specific areas**, these are:

- Literacy;
- Mathematics;
- Understanding the world and
- Expressive arts and design.

These 7 areas are used to plan your child's learning activities. The professionals teaching and supporting your child will make sure that the activities are suited to your child's unique needs. It is designed to be really flexible so that staff can follow your child's unique needs and interests. Children in the EYFS learn by playing and exploring, being active, and through creative and critical thinking which takes place both indoors and outside.

Ways you can help.

Children at Grove follow the 'Little Wandle Letters and Sounds Revised' synthetic phonics programme to learn their letters and sounds and begin to read. Watch the Little Wandle video on our website to help you to support your child to learn their sounds.

<https://www.littlewandlelettersandsounds.org.uk>

Support your child by reading their reading book with them. Each child has access to ebooks that match their class reading book.

Write a comment in their home reading log.

Share picture and story books each day with your child. Bedtime provides a great opportunity to develop their love of reading story and picture books.

Encourage your child to recognise and write their own name, avoid using capitals with the exception of the first letter.

Mathematics- encourage your child to count objects around the home. Count one object and say one number at a time as this is the way children learn their numbers.

Social skills – encourage your child to use the toilet and try to toilet train them before they start at Grove. Encourage your child to wash their hands, put on their coat and attempt to do it up.

Top Tips.

Here are some top tips to help when your child starts at Grove

- Write their name clearly in all their belongings including their coat and bag.
- Bring your child and collect them on time, this establishes a positive school routine.
- Provide a named water bottle
- Read with your child every day
- Help your child to recognise and put on their own coat
- Help your child to recognise their name, written in lower case letters with the exception of the first capital.



Snacks and lunchtime:

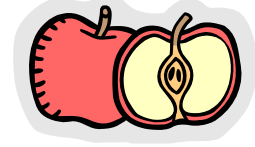
At Grove we provide all children with a piece of fruit every day to encourage healthy eating habits. Children do not need to bring additional food to school. Children are not allowed to bring fizzy drinks or milkshakes to school; they have access to water. Children are encouraged to bring a water bottle with

their name on which they will take home at the end of each day. We encourage children to join their teacher, in small groups, to share fruit and milk.

Parents have the option of staying at school for a school dinner or providing a healthy packed lunch.

From September 2014 children who are in reception, year 1 and year 2 in a state-funded school were offered a free healthy school lunch. Schools ask parents to complete an Early Years Pupil Premium form. By registering for free meals every school could raise an extra £1,385 for school to fund valuable support like extra tuition, additional teaching staff or after school activities.

Your child will have a named key worker for the lunchtime period who will oversee their care, play and safety. The key worker will communicate with the class teacher at the beginning and end of the lunchtime sessions. Once in the dining hall our dining room carer, supported by Grove staff, ensures children select and eat a balanced meal. After dinner children will have access to the foundation stage outdoor learning environment for play, relaxation and learning during the lunchtime period.



Attendance and time keeping

Attendance and good time keeping is very important at Grove. We expect the children to have 100% attendance and they should arrive in school for their session times. Your child will have the opportunity of winning attendance awards throughout the year for good attendance and time keeping.

Sessions.

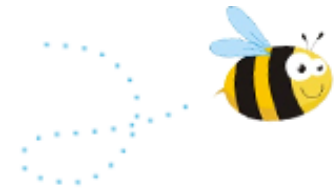
Nursery:

Part-time children attend Grove nursery for 15hours per week.

Monday and Tuesday 8:30am -3:30pm, Wednesday 8:30am-11:30am.

Or

Wednesday 12:30pm- 3:30pm, Thursday and Friday 8:30am-3:30pm



Nursery parents are invited to collect their children from the nursery classrooms situated off the small hall.

Reception:

The school doors open at 8.30am. All children should be in their classroom by 8.45am for registration.

Induction sessions:

Week One: Thursday- Friday 8:45am – 11:30am **or** 12:30pm- 3:15pm (staff will inform you which induction sessions to attend)

Week Two onwards: Monday – Friday 8:45am – 3:15pm

The lunchtime period is from 11.30am to 12.30pm.

School finishes at 3.15pm we invite all parents to collect their child from the classroom.

We request that all children are collected from class by a named adult (older than 16) and not a brother or sister at Grove.

School Uniform

All children in school are required to wear school uniform.

For Girls:

A grey pinafore, skirt or trousers with a white blouse, green sweatshirt and black shoes.



For Boys: Grey trousers, white shirt, green sweatshirt and black shoes.

There are many local shops which sell a wide range of uniform. Shoes should be hardwearing. Open-toed shoes or heeled shoes are unsafe in school and are not allowed. For safety reasons, children should only wear stud earrings.

Socks should be plain grey/green, or black.

Headscarves should be green or black.

We do not accept children having lines or patterns cut into their hair.

Medical Concerns:

Your child's health is our priority at Grove. During the induction meeting parents are asked to share any medical concerns or conditions your child may have. This includes allergies and food preferences, for example vegetarian or halal. We have a school nurse who works with parents and practitioners to form care plans tailored to your child's medical needs. This ensures that safe care is provided.

