

Name..... Date.....

Reception Holiday Project

Easter 2018

After the half-term holiday our topic will be 'Ready Steady Grow'.  
Please put the pictures in the correct order to show how the plant grows.

Please bring your homework back to school on  
Monday 16th April 2016.



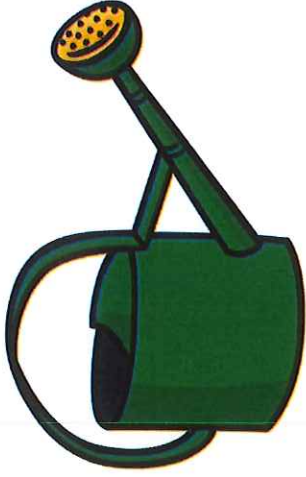
Grove School



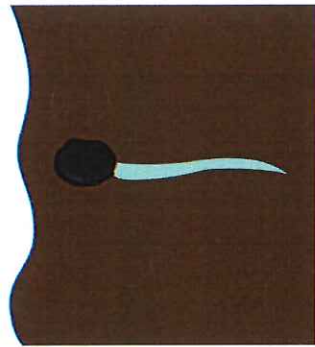
Fill the plant pot  
with soil.



Plant the seeds into  
the soil.



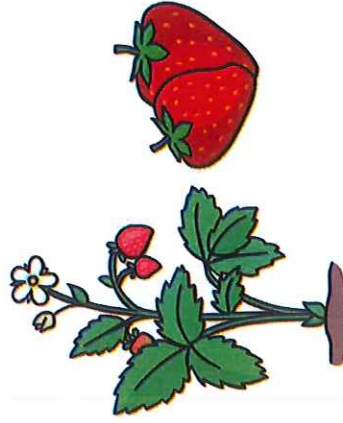
Using a watering can,  
water the seeds.



The seeds begin to sprout  
and grow.



The plant grows and  
begins to flower.



Fruit then grows on  
the plant.

# Fruit Plant Growth Sequencing

